

Detecting Asymmetric Plans Using Case-Based Reasoning

Emilio Remolina, Daniel Fu
Stottler Henke
San Mateo, CA
remolina@shai.com, fu@shai.com

James L. Eilbert
CHI Systems
Lower Gwynedd, PA
jeilbert@chiinc.com

ABSTRACT

In recent years, government agencies have displayed a growing interest in the prospect of detecting the activity of clandestine organizations. The clandestine organization and the government agencies who oppose them are an example of asymmetric warfare, which comes in contrast to traditional notions of armed conflict involving force-on-force scenarios where opposing sides can be measured according to force size, weapon assets, etc. We present an approach to the problem of detecting the execution of mission plans by the unconventional side in asymmetric warfare. The problem is to find threatening patterns of action in a data collection characterized as massive, relational, incomplete, noisy, and corrupt. In this paper we describe Sibyl: a system embodying a case-based reasoning (CBR) approach to automated plan detection. Sibyl features a “spanning case base” that covers the space of theoretical scenarios. Each case is used in a state-space search algorithm to adapt case elements to the data. Sibyl also features a graphical programming language that allows analysts to draw patterns to be found in an evidence database. We describe experimental results obtained for the Russian mafia domain used by DARPA’s Evidence Extraction and Link Discovery (EELD) program.

ABOUT THE AUTHORS

Emilio Remolina is an Artificial Intelligence research scientist at Stottler Henke Associates, Inc.. He received his Ph.D. in Computer Science, specializing in cognitive robotics from the University of Texas at Austin in 2001, and his M.A. in Mathematics, specializing in Logic and Probability from the Universidad de Los Andes, Colombia, in 1993. His graduate work focused on “map building”, whereby an autonomous robot creates a spatial representation of its environment. His dissertation “A logical account of causal and topological maps” describes how an agent combines sensory information and actions it performs in order to build and localize in a topological map. Dr. Remolina’s research interests include intelligent tutoring systems, planning, simulation and common sense reasoning.

Daniel Fu is a project manager at Stottler Henke Associates, Inc. He received a B.S. from Cornell University, and a Ph.D. from the University of Chicago, both in Computer Science. Dan is a project manager for the Sibyl project described here, which entails development of a case-based reasoning link discovery tool. He is also a project manager for an Air Force wargaming project to provide simulation-building tools for student and instructor use at the Air Force Wargaming Institute. Dr. Fu has also been involved in the design and implementation of a number of AI systems, including AI middleware tools and intelligent tutoring systems.

James L. Eilbert received the PhD degree in Biomathematics from North Carolina State University in 1980. He worked as an Assistant Professor in the Mathematics Dept. at Drexel University in Philadelphia, PA for six years, and as a Senior Research Scientist at Grumman Corporation for nine years before coming to his current position as a Principle Cognitive Scientist at CHI Systems, Inc., Fort Washington, PA in 1997. His research interests include image processing and models of human vision, neural network architectures, automatic target recognition, geographic information systems, as well as link discovery and data fusion.

Detecting Asymmetric Plans Using Case-Based Reasoning

**Emilio Remolina, Daniel Fu
Stottler Henke
San Mateo, CA
remolina@shai.com, fu@shai.com**

**James L. Eilbert
CHI Systems
Lower Gwynedd, PA
jeilbert@chiinc.com**

INTRODUCTION

In recent years, law enforcement and government agencies have displayed a growing interest in the prospect of detecting the activity of clandestine organizations. Terrorist organizations and organized crime are two such examples where members evade detection wherever possible so as to avoid mitigation of their efforts. Other than overtly illegal acts, most actions taken by members on behalf of the organization appear harmless. Actions such as phone calls, bank transactions, and fertilizer purchases are in and of themselves innocuous, yet when linked together the activities could constitute a threat. If law enforcement or government agencies are empowered with tools that recognize potential threats such as the construction of a bomb, they could potentially preempt a harmful plan before it comes to fruition.

The clandestine organization and the government agencies who oppose them are an example of asymmetric forces. Asymmetric warfare has seen increased attention in recent years, and comes in contrast to traditional notions of armed conflict involving force-on-force scenarios where each opposing side can be characterized according to doctrine, command and control structure, force size, weapon assets, etc. Opposing asymmetric forces have differing organization, ideology, support, and goals.

The government agencies that oppose clandestine organizations typically have three operational components: (1) recognition and collection of data, (2) data analysis and hypothesis formation, and (3) operational planning and execution. Data analysis and hypothesis formation is our focus here, particularly the discovery of a clandestine organization's plans. In this case, we worked in the domain of Russian organized crime. As part of the DARPA Evidence Extraction and Link Discovery (EELD) program, we used a simulator that takes as input a domain theory of how Russian mafias operate and proceeds to generate test data. Hierarchical task networks were used in part to describe the domain theory. Several simulation

parameters are available to adjust quantity of data, noise, observability, corruption, and complexity.

PROBLEM DESCRIPTION

Other than the fact that clandestine organizations try to evade detection, there exist three significant obstacles any approach to detection will confront:

1. **Massive data:** The size of data is substantial. It breaks down into primary and secondary pieces of evidence. Primary evidence comes from news sources or intelligence agencies as relevant information. The size of primary evidence is eclipsed by secondary evidence, which is latent data such as phone numbers, street addresses, phone calls, and bank transactions.
2. **Noise:** Almost all secondary data is irrelevant, yet the parts that are relevant are absolutely necessary to recognize an asymmetric plan.
3. **Incomplete information:** Much of what we would consider to be relevant data is missing. As it is, successful mitigation of clandestine activity requires plan recognition before complete realization.

Despite these obstacles, one important regularity we identify is that the organization's behavior is ultimately goal-driven. The behavior is structured, occurs over a long duration (months to years), and involves several people. Thus, the behavior is the logical execution of a plan which motivates our approach.

SCOPE & SIBYL

The CBR system we developed, called Sibyl, was tested in the context of a bigger system called SCOPE, which stands for Socio-Culturally Oriented Planning Environment (Eilbert et al., 2002). SCOPE seeks to improve upon the human analysis process by automatically linking evidence from a number of sources into graphs, and formulating hypotheses correlating these graphs to underlying plans. Sibyl was used as a CBR technique to generate these hypotheses.

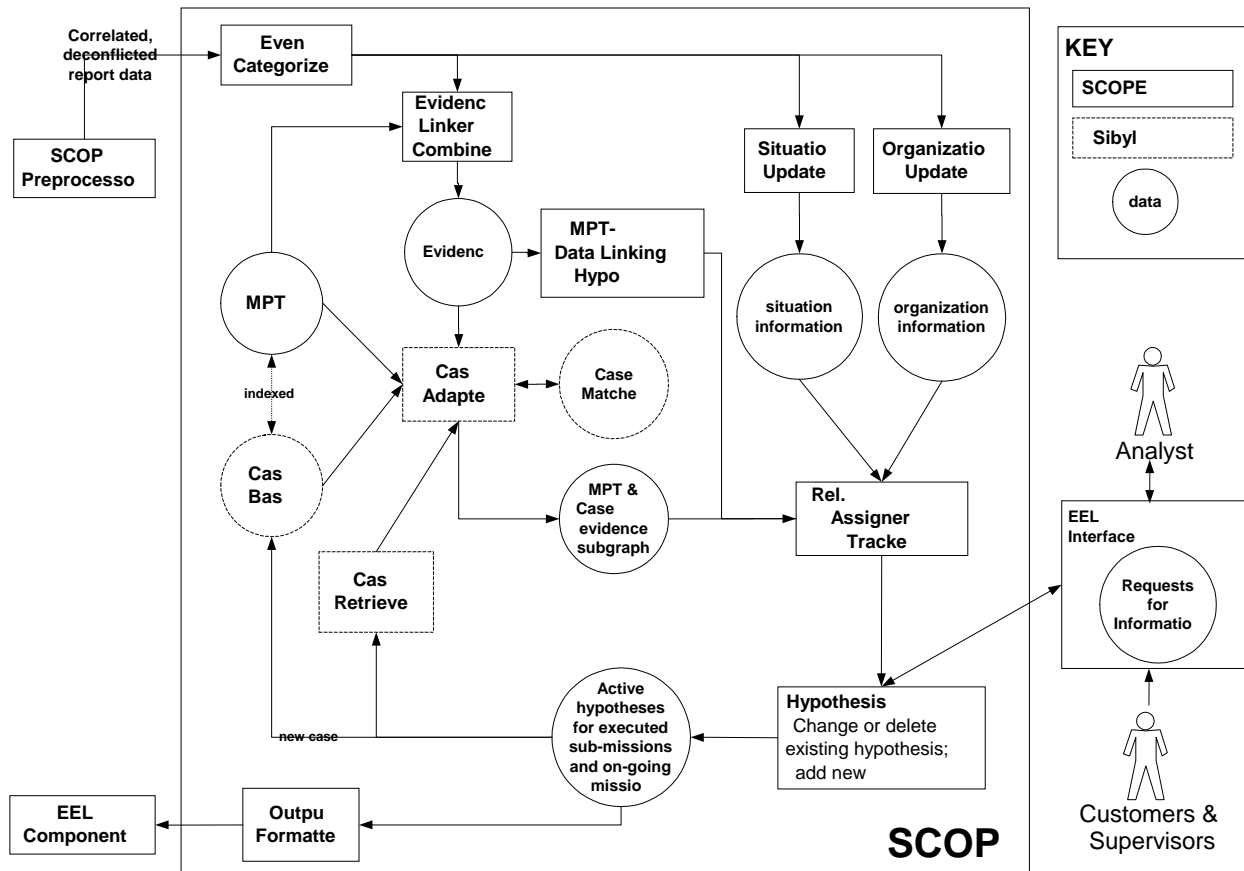


Figure 1: SCOPE - Sibyl architecture.

Figure 1 shows the architecture used in SCOPE which is a synthesis of cognitive modeling and CBR technology. The relevant knowledge/data bases (shown in circles) available to a SCOPE model (or an analyst) include:

- A set of known facts about the current activity, mainly about breaks in the terrorist organization's secrecy, and the relations among those facts (situation information);
- A catalog of organizations and general information about each of them such as historical and theoretical knowledge about how organizations train, acquire financing, communicate, plan, and operate, as well as information concerning religious, ethnic, and cultural factors that may impact their operations. (organization information);
- A set of mission plan templates (MPTs) that capture the invariance in the planning process associated with a particular domain;
- A case base; and

- Intermediate hypotheses that SCOPE builds and maintains until queried by an analyst.

Input to the SCOPE system comes as report data from some type of evidence extraction mechanism which organizes data into a representation understood by SCOPE. From there, the evidence is channeled into a current body of evidence, situation information, and organization information. Mission plan templates (MPTs), authored by the analyst, are used to represent the analyst's knowledge of how clandestine organizations operate. Along with the case base and body of available evidence, Sibyl's Case Adapter maps a new case or MPT to the evidence thereby forming a new hypothesis. It is then evaluated and forwarded to the Hypothesis Manager, which manages all active hypotheses. The Sibyl module matches current evidence to plans in its case base as well as already-existing hypotheses, generating plausible hypotheses about possible current organization plans.

SCOPE provides mechanisms for reasoning about and combining these different sources of information. The

architecture used in SCOPE is a synthesis of cognitive modeling and CBR technologies. The fundamental data passed between the SCOPE modules are hypotheses about the organization's plan. One SCOPE module, the Relative Probability Assigner & Tracker, is based on a cognitive model of an intelligence analyst conducting situational logic (Heuer, 1999), which is built using the iGEN toolset (Le Mentec et al., 1999). This module acts as SCOPE's primary controller. It also encodes the information in MPTs within a set of cognitive tasks, and has the meta-cognitive ability to spawn and track "what if" hypotheses about plausible mission plans. The cognitive model module reasons about how plausible hypotheses about plan components fit together, given the organizational and cultural constraints. It will also manage the active hypotheses related to MPTs taking into account the uncertainty in the evidence and sensitivity of the hypotheses.

By combining and exchanging of hypotheses between the iGEN and Sibyl modules, the SCOPE system takes advantage of their complementary strengths and weaknesses while generating hypotheses on mission plan execution. Sibyl needs a bigger portion of the complete evidence graph, but is not sensitive to misconceptions an analyst may have as embodied in an MPT. iGEN can function with an evidence graph that instantiates a much smaller portion of a mission plan than Sibyl; however it is quite sensitive to pattern description errors that may get into an MPT.

APPLICATION DESCRIPTION

Because the traditional CBR approach of computing a feature vector from the input data does not suggest an obvious representation for our problem, our strategy was to form a spanning case base covering the full range of possible plans. Using a domain theory and simulator, we generate nearly all of the mission plans for activity possible in the domain. Detecting plans in the evidence data amounts to a search through the case memory for the case that is consistent with a subset of data. We match the entire case base against evidence. Hence, the CBR phase of adaptation is paramount while retrieval is secondary; in fact, there is no indexing. This approach is the core technology basis for Sibyl.

The immediate consequence of employing a spanning case base is a massive case base. To make our approach practical, we used the Cyc ontology to reduce the case size by abstracting event types. For example, sending an email could be equivalent to a phone

conversation. By abstracting case elements, it was possible to condense millions of cases into hundreds. Having reduced the case base size, we focused on the creation of fast mapping techniques. We match a stored case against the evidence taking into account that (i) actors in the case are not the same as in the evidence (e.g., people in the case are different from people in the evidence), (ii) events in a case can be fulfilled by different events in the evidence (e.g., a meeting and a phone call can have the same purpose), and (iii) not all the relationships in the case have to be known in the evidence (i.e., evidence is incomplete).

Case and Evidence Representation

A case describes how a particular event (e.g., contract-kill, phone call, wire transfer) took place. Events are described in terms of subevents and properties associated with the event. Every object in the representation (e.g., events, event property values) has a type, and types are organized by the Cyc ontology. Events are linked by subevent relationships and by common actors (e.g., the same person making a bank deposit and a phone call). Events have associated spatio-temporal properties: where and when they occurred. The value of these properties admits various degrees of uncertainty (e.g., a murder event happened somewhere in Europe on May 2000). We can think of a case as a directed graph where nodes represent objects in the case (e.g., events, people, telephone numbers, bank accounts) and edges represent relationships between objects.

Figure 2 shows a partial example of a case involving a murderForHire case (UID6166). A hit contractor (UID5312) made a phone call (UID6136) to a middleman (UID5317) to arrange a murder. Then the contractor paid (UID6141) by doing a wire transfer (UID6139) from his account (UID5306) to the middleman's bank account (UID5294). The middleman eventually hires the perpetrator (UID5321), who observed (UID6151) the victim (UID5160) before performing the murder (UID6153).

The evidence is a database of reported events. In general this database is incomplete. For example, a murder event can be reported where the killer is not known. A PlanningToDo-Something event can be reported without reporting its subevents: whether the persons planning to do something met or talked on the phone.

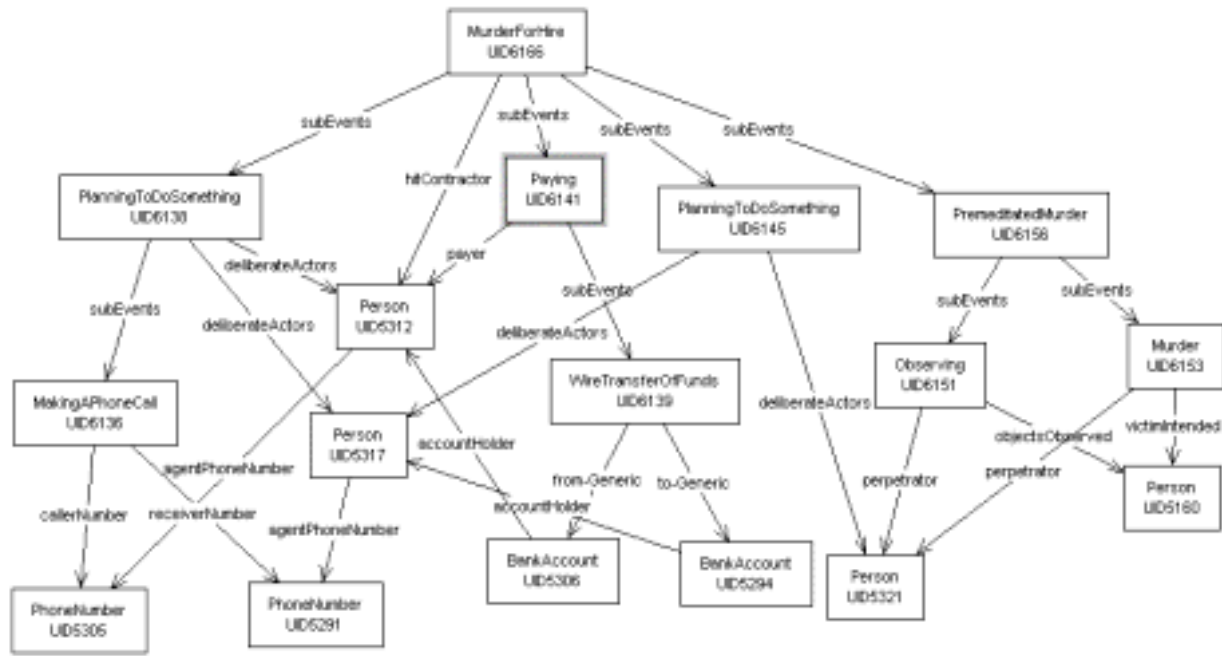


Figure 2: An example case.

Search Algorithm

We use a best-first search algorithm to match cases against the evidence. A search state is a tuple $\langle c, r, m \rangle$ where c is a case, r is a list of edges in c that need to be considered for a match, and m is a set of pairs, each pair consisting of a graph node in c and a node in the evidence. Let f_m be a one-to-one function for node pairs in m such that $f_m(a) = a'$ where a is a node in c and a' is a node in evidence. The set of pairs has an associated weight indicating node similarities. A heuristic evaluation function F assesses the quality of the mapping m by assigning m a real number, where higher values of m are better.

The initial states of the search have the form $\langle c, e_c, \emptyset \rangle$ where e_c is a list of all the edges appearing in case c . The initial order in e_c is important for the performance of the algorithm as Sibyl processes edges sequentially (we later present our heuristic to order e_c). The basic best-first search algorithm we use is as follows:

1. Let initial states $H = \{ \langle c_0, e_{c_0}, \emptyset \rangle, \langle c_1, e_{c_1}, \emptyset \rangle, \langle c_2, e_{c_2}, \emptyset \rangle, \dots, \langle c_n, e_{c_n}, \emptyset \rangle \}$ where n is the number of cases in the case base.
2. Identify best hypothesis $h = \langle c, r, m \rangle$ from H .
3. If r is empty, h is the best hypothesis. Stop.
4. Generate successors S from h .
5. Let $H = H - \{h\} \cup S$.
6. Go to 2.

We derive the successors of a state $\langle c, r, m \rangle$ by considering the first edge e in r . Either m already pairs the two nodes in e , or pairings for those nodes need to be generated and added to m . Each directed edge is a tuple $\langle s, d, l \rangle$ where s is the source, d is the destination, and l is the label. Next is the procedure for generating successors:

```

Procedure GENERATE-SUCCESSORS (state  $\langle c, r, m \rangle$ )
  Let the first of  $r$  be edge  $\langle a, b, l \rangle$ 
  if ( $a$  and  $b$  are in the domain of  $f_m$ )
  {
    if edge  $\langle f_m(a), f_m(b), l \rangle$  is inconsistent with evidence
      return  $\emptyset$ 
    else
      return {  $\langle c, r - \{ \langle a, b, l \rangle \}, m \rangle$  }
  }
  else
  {
    Let  $r' = r - \{ \langle a, b, l \rangle \}$ 
    Let  $s = \{ \langle c, r', m \rangle \}$ 
    For each edge  $\langle a', b', l' \rangle$  in evidence matching  $\langle a, b, l \rangle$ 
    {
      Let  $m'$  be a new copy of  $m$  with
         $f_m(a) = a'$  and  $f_m(b) = b'$ 
       $s = s \cup \{ \langle c, r', m' \rangle \}$ 
    }
    return  $s$ 
  }

```

Since the evidence is generally incomplete (e.g., usually the perpetrator in a murder is not known), not all the edges in a case require a counterpart in the evidence. The state $\langle c, r', m \rangle$ is a possible successor for $\langle c, r, m \rangle$. In this case, the edge $\langle a, b, l \rangle$ is not required to hold in the evidence. The heuristic evaluation function will penalize this state but the state will remain in the search queue.

Next we describe the main aspects of the above algorithm: detecting inconsistent mappings, evaluating the goodness of a state, generating match candidates, and pruning the search space.

Inconsistent Mappings

Since the evidence is incomplete, we cannot generally check whether an arbitrary relationship is false (i.e., it does not hold in the evidence) or is missing from the evidence. There are, however, instances where an edge $\langle f_m(a), f_m(b), l \rangle$ could not exist in the evidence, allowing mapping m to be deemed inconsistent. For example, the victim of a murder is always unique and usually identified, and so it is possible to consider a mapping inconsistent if it posits a second victim for the same murder. In contrast, the attendees of a meeting are not unique and usually unidentified (i.e., a report can indicate that a meeting took place but the report may not indicate all the participants). In these instances, it is not possible to decide whether a mapping is inconsistent.

State Evaluation Function

Our state value heuristic is a function of the number and similarity of matches. The function is made up of the following parameters associated with a state $\langle c, r, m \rangle$:

- n is the number of edges in case graph c
- u is the number of case edges unmatched
- v is the number of case edges matched to evidence
- w is the average pair similarity in m
- α and β respectively weigh how much importance is given to the quality of the matches associated with the evidence explored so far and how much importance is given to the search progress so far.

The form of the state evaluation function is:

$$F(\langle c, r, m \rangle) = \alpha(v - u) + \beta w \frac{u + v}{n} \quad (1)$$

Generating Match Candidates

Generating match candidates always occurs in the context of explaining the case edge associated with a state $\langle c, r, m \rangle$. The candidates for a case node are

evidence nodes of the same exact type that preserve a given set of labels to m . A match m preserves a case edge $\langle a, b, l \rangle$ if an edge $\langle f_m(a), f_m(b), l \rangle$ holds in the evidence. Nodes in a pairwise mapping must be of the same type, thus there will also exist edges $\langle a, t_1, isa \rangle$, $\langle f_m(a), t_1, isa \rangle$, $\langle b, t_2, isa \rangle$, and $\langle f_m(b), t_2, isa \rangle$ where t_1 and t_2 are types such as Person or EmailSending, and the isa label denotes the type relationship. The set of labels that must be preserved include subEvent, accountHolder, agentPhoneNumber, and to-generic. Not all the edges in a case must be preserved, since evidence is in general incomplete.

Consider the problem of matching case node UID_1 representing an email sending event as edge $\langle UID_1, EmailSending, isa \rangle$. Suppose in addition that it is known that UID_1 is a subevent of a planningToDoSomething event UID_2 (edges $\langle UID_1, UID_2, subEvent \rangle$ and $\langle UID_2, planningToDoSomething, isa \rangle$). Moreover, it is the case that UID_2 has already been mapped: $f_m(UID_2)$ exists. Since we want to preserve the subEvent relationship, the match candidates for UID_1 will be all evidence nodes x such that edges $\langle x, f_m(UID_2), subEvent \rangle$ and $\langle x, EmailSending, isa \rangle$ exist in the evidence.

Pruning Heuristics

The size of the match candidate set determines the branching factor of the search. The smaller the set the better. As early as possible, it is important to prune search paths leading to inconsistent hypotheses. In addition to preserving a certain link, other pruning heuristics include:

- Mappings are one-to-one relationships: remove from candidates those evidence nodes already in the range of f_m .
- Matching should preserve temporal constraints: if event #1 occurs before event #2 in the case, then $f_m(event \#1)$ should occur before $f_m(event \#2)$ in the evidence.

Temporal Reasoning

Each event e has an interval $[lb(e), ub(e)]$ where lb is lower bound, ub is upper bound, delimiting when the event must have occurred. A subevent of e occurs in the time window of his parent: if e_1 is subevent of e_2 , then $[lb(e_1), ub(e_1)] \subseteq [lb(e_2), ub(e_2)]$. A mapping m is consistent if it preserves all temporal relationships between events known in a case. If case events e_1 and e_2 have a relationship R where $[lb(e_1), ub(e_1)] R [lb(e_2), ub(e_2)]$, and $f_m(e_1)$ and $f_m(e_2)$ are defined, then the

evidence must have the same relationship $[lb(f_m(e_1)), ub(f_m(e_1))] R [lb(f_m(e_2)), ub(f_m(e_2))]$.

Sibyl uses the above condition to prune the set of match candidates for events in a case. For example, suppose the following:

- $\langle meeting32, planning35, subEvent \rangle$
- $\langle meeting33, planning35, subEvent \rangle$
- $ub(meeting32) < lb(meeting33)$
- $ub(meeting33) < ub(planning35)$
- $f_m(planning35)$ and $f_m(meeting32)$ are defined

A candidate evidence node x for meeting33 must satisfy

$$ub(f_m(meeting32)) < lb(x) \text{ and } ub(x) < ub(f_m(planning35))$$

In practice, as the matching process maps additional related events, the temporal constraints become much more stringent.

Ordering the Case Evidence

Recall that the initial states of the search have the form $\langle c, e_c, \emptyset \rangle$ where e_c is a list of all the edges comprising case c . During the search, the list is explored sequentially. The initial order of edges is important for the performance of the algorithm. For example, it would be unwise to start the search matching a phone call event, which will have a massive number of possible matches in the evidence, rather than to start the search matching a murder event, which has fewer possible matches and provides more information about the key actors in the case (e.g., the victim or the person following the victim before the murder).

In our current application, the user manually specifies a partial order in which events in a case should be considered, with key events types having highest priority. These events offer tend to constrain the number of viable match candidates. The algorithm “grows” a single connected graph by continually selecting immediate edges based on the user’s specification. The order in which edges are added to the graph is the order of e_c .

Abstracting the Case Representation

So far for the case-matching algorithm, a case node must be matched to an evidence node of the same type. This turns out to be too restrictive as the number of distinct cases would be in the millions. Two cases could be identical except for one single event, perhaps

a phone call in one, and an email in the other. To shrink the size of the case base, we abstracted events using the “isa” relationship in Cyc. Edge labels were renamed to be abstracted types. Thus, a phone call and email would be renamed to be a generic “contact” event. Using abstracted labels allowed us to shrink the size of the case base into the hundreds.

Matching a Case Base to the Evidence

Earlier we discussed the search procedure and method for generating new states. When applied with a case base, we want to let all cases have an opportunity to match against the evidence. We therefore employ a round-robin timeout approach such that during a round Sibyl uses the best state originating from each case in the case base. For each state chosen, either a match is found, or, more frequently, a time limit halts the search for the time being until the next round.

After a round ends, the time limit for the next round is increased and the parameters of the heuristic functions are changed: α (representing the quality of the match) is decreased and β (representing the depth of the search) is increased. The term β/α is proportional to the number of case edges that are allowed to be skipped before backtracking. When no matches have been found, our round-robin policy attributes the situation to a lack of evidence supporting edges in a case. Consequently, the policy increments β/α to increase the chances of finding a match.

EVALUATION

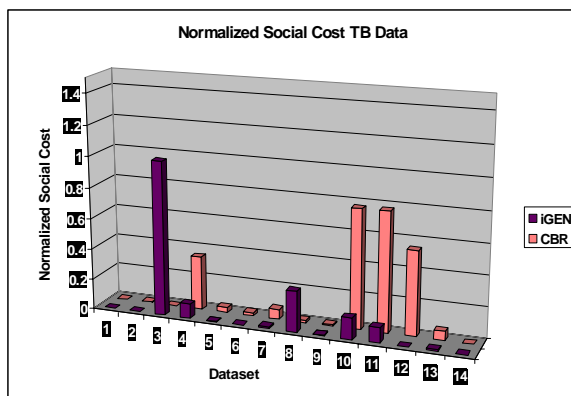
We evaluated SCOPE system as part of DARPA’s EELD year 2002 evaluation. The evaluation software was available to all participants. A total of fourteen evidence databases were used (see Table 1), each with a Bayesian and task network generated version. Because we imported the task network data directly into Sibyl, and because the iGEN portion used the task network for knowledge engineering purposes, we only tested SCOPE on the task network datasets. In Table 1, **Size** refers to the number of valid threats in the evidence. A threat is a “valid” behavior pattern that is present in the evidence. **Observability** refers to how complete the evidence is. **Connectivity** measures the degree up to which the same people/events are part of different threats. **Corruption** refers to how accurate the evidence is; e.g., whether middleman and killer roles are swapped for two people. **Noise** refers to evidence that might be useful, but are not.

Table 1: Test data set characterization.

Data Set	Size	Observability	Corruption	Connectivity	Noise
1	Small	Very high	None	Medium	None
2	Small	Average	None	Medium	Medium
3	Small	Very low	None	Medium	High
4	Medium	Very low	None	Medium	High
5	Medium	Average	None	Medium	Medium
6	Medium	Very high	None	Medium	None
7	Medium	Average	None	High	Medium
8	Medium	Average	None	Low	Medium
9	Medium	Very high	Low	Medium	Medium
10	Medium	Very high	High	Medium	Medium
11	Large	Very low	None	Medium	High
12	Large	Average	None	Medium	Medium
13	Large	Very high	None	Medium	None
14	0	Average	None	Medium	High

For each dataset, the output of our application was given a score (a real number between 0.0 and 1.0, the smaller the better) representing the overall match quality. The scoring metric factors false negatives (not reporting cases that should be reported) and false positives (reporting threats that do not exist).

Only the iGEN scores were submitted for formal evaluation. For our own evaluation purposes, Sibyl and iGEN were separately tested. Figure 3 shows the scoring results for our application, broken into Sibyl and iGEN scores. On the normalized social cost metric, Sibyl scored zero on three of the fourteen datasets provided, indicating a perfect mapping, and scored greater than zero and less than 0.05 on four others, indicating a near-perfect mapping. iGEN scored zero on three, and greater than zero and less than 0.05 on five others.

**Figure 3:** Evaluation results for task-based data sets.

In general, the lower the dataset's observability, or the higher the corruption, the harder it is to detect a plan in the evidence; cf, datasets 3, 4, 10 and 11. Sibyl's pruning heuristics and the order of a case's edges favor

high-level events (e.g., planning a murder) over low-level events (e.g., making a phone call). The heuristics will prune valid search paths in the presence of high-level noise. Figure 3 suggests how SCOPE can benefit from threat hypotheses generated using Sibyl (e.g., datasets 3 and 8). When integrated with iGEN, Sibyl will contribute as a hypothesis generation module, and iGEN will manage hypotheses from modules like Sibyl.

In summary, although the evaluation does not allow one to draw any general conclusions, we nevertheless feel our results are promising.

RELATED WORK

There has been increasing work in CBR that uses graph-based representations. Perhaps the most closely related is the Caper system (Sanders et al., 1997) which searches for subgraphs within a semantic network. Similar to Sibyl, there is no a priori indexing, or construction of a feature vector.

Bergman & Stahl (1998) use object-oriented "class hierarchies" to model the similarity and differences between objects. Because this method relies on objects being thought of as distinct entities, it is unclear how it applies to our problem as, for example, a person in a case has several relationships to other persons and events. Indeed, a person's relevance is a product of the person's actions and relationships to other people. It is simply not possible to judge similarity through a myopic lens. The myriad connections among associated people and events must be considered.

Messmer & Bunke (1995) detail an algorithm that constructs a decision tree to determine subgraph isomorphism in polynomial time. The approach will not scale with our problem as the tree is exponential in the size of the input in worst case. As well, the matching is a form of exact matching.

Gentner & Forbus (1991) describe the MAC/FAC system which is a model of analogical reminding. Matches are made between structurally similar concepts and verified in the SME portion of FAC. Wolverton & Hayes-Roth (1994) also explore analogical retrieval, but focus on successive revision of heuristics to guide search.

Though Sibyl shares a graph representation similar to all of the above work, Sibyl's differences with all these approaches is driven by the nature of input data. Because of the novel nature of the data, the search mechanism must work by adapting its cases to the data.

This is in contrast to the related systems that handle small amounts of input data to search over a larger case base or semantic network.

CONCLUSION

We have described a CBR approach to plan detection that handles input data characterized as relational, massive, noisy, incomplete, and corrupted. The nature of the data demanded a new perspective on case retrieval and adaptation. Case retrieval, typically emphasized in the literature, was non-existent in Sibyl as cases were never indexed. Indexing would have required some processing on the input to construct a feature vector. This is an untenable task for two reasons. First, any fragment of evidence could be somehow relevant, but to determine its relevance, more evidence must be considered. What is important here is the relationship between fragments. Only together can they form a threatening pattern. Second, considering all input evidence is out of the question.

Case adaptation was our focus. We started with a strong domain theory of mission plan execution, and concentrated on mapping complete cases to the evidence. Because no case is preferred over another initially, the case base needed to be condensed from millions into hundreds. This was achieved by abstraction of isa types using the Cyc ontology. Cases were mapped using a search heuristic that traded off mapping quality with search progress. Pruning heuristics, such as temporal ordering, were used to limit the search space.

The combination of AI search techniques and domain dependent pruning heuristics made our case adaptation algorithm effective for DARPA's EELD year 1 evaluation.

ACKNOWLEDGEMENTS

This research is sponsored by the Defense Advanced Research Projects Agency and managed by Rome Laboratory under contract F30602-01-C-0200. The views and conclusions contained in this document are those of the authors and should not be interpreted as necessarily representing the official policies, either expressed or implied of the Defense Advanced

Research Projects Agency, Rome Laboratory, or the United States Government.

We are thankful to the engineering staff of the AFRL Information Directorate for their comments on an earlier draft of this paper.

REFERENCES

- Bergmann, R., & Stahl, A. (1998) Similarity Measures for Object-Oriented Case Representations. *Proceedings of the 4th European Workshop on Case-Based Reasoning*.
- Eilbert, J.L., Carmody, D.M., Fu, D., Santarelli, T., Wischusen, D., & Donmoyer, J. Reasoning About Adversarial Intent in Asymmetric Situations. (2002). *AAAI Fall Symposium on Intent Inference*.
- Gentner, D., & Forbus, K.D. MAC/FAC: A Model of Similarity-Based Retrieval. (1991). *Proceedings of the Cognitive Science Society*.
- Heuer, R. (1999). *The Psychology of Intelligence Analysis*. Center for the Study of Intelligence, Central Intelligence Agency. <http://www.cia.gov/csi/books/19104/index.html>
- Le Mentec, J.-C., Zachary, W., & Iordanov, V. Knowledge Tracing of Cognitive Tasks for Model-based Diagnosis. (1999). *Proceeding of 9th International Conference on Artificial Intelligence in Education. Le Mans, France*.
- Messmer, B.T., & Bunke, H. (1995). Subgraph Isomorphism in Polynomial Time. Technical Report TR-IAM-95-003.
- Sanders, K.E., Kettler, B.P., & Hendler, J.A. (1997). The Case for Graph-Structured Representations. *Proceedings of the Second International Conference on Case-based Reasoning*.
- Wolverton, M., & Hayes-Roth, B. (1994). Retrieving Semantically Distant Analogies with Knowledge-Directed Spreading Activation. *Proceedings of the National Conference on Artificial Intelligence*.